



iClockS560

RFID Time & Attendance terminal
with PoE



iClockS560 is the perfect solution for small and middle installations. It incorporates RFID module and internal POE which working together with new Push SDK offers a complete solution for cloud systems. The color TFT display makes easier to all users an easy menu management. It brings many new experiences, including the stunning GUI, rock-solid stability, fast matching speed and expandability.

Features

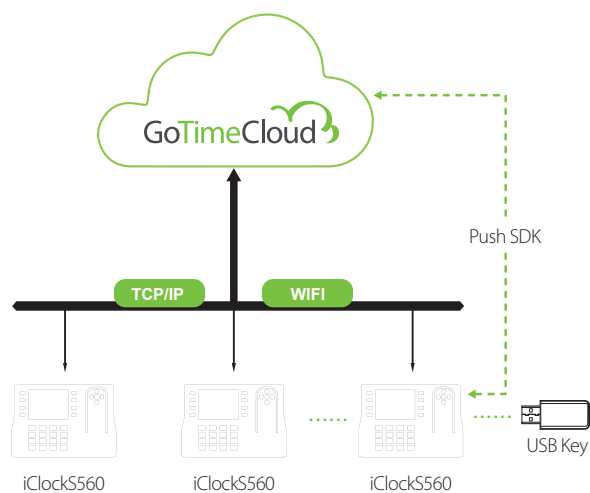
- Remarkable user experience with intuitive and stunning UI.
- Interface operation adopts modularized hierarchical design. Simpler, better and more logical.
- Faster matching speed: less than 0.5 second.
- RFID verification.
- Data backup and retrieve.
- Advanced User ID consisted of letters and numbers.
- Chip encryption for firmware protection.
- Excellent expandability.
- Easy to extend functions and customize customers demand.

Compatible with:

Specifications

ID Card Capacity	10,000
Record Capacity	50,000
Display	3.5-inch Screen
Communication	TCP/IP,RS232/485,USB Host
Standard Functions	Webserver, Work Code, DST, Short Message, Record Query, Schedule-bell, Automatic Status Switch, Photo ID, T9 Input, Internal PoE
Optional Functions	MF Card, Internal Wi-Fi
Software	GoTime Cloud
Power Supply	DC 5V 1.5A
Verification Speed	≤0.5 sec
Operating Temp.	0°C- 45°C
Operating Humidity	20%-80%
Dimension	189×136×44mm (Length×Width×Thickness)
Gross Weight	1.30 kg

Configuration



What's in the Box

