



iClockS880

RFID Time & Attendance terminal
with Access Control



iClockS880 is a RFID reader for time & attendance and access control applications. It adopts a brand new firmware and provides an unprecedented user experiences with stunning GUI, rock-solid stability, fast matching speed and expandability. In combination with GoTime Cloud, iClockS880 offers the best performance for medium and large companies.

Features

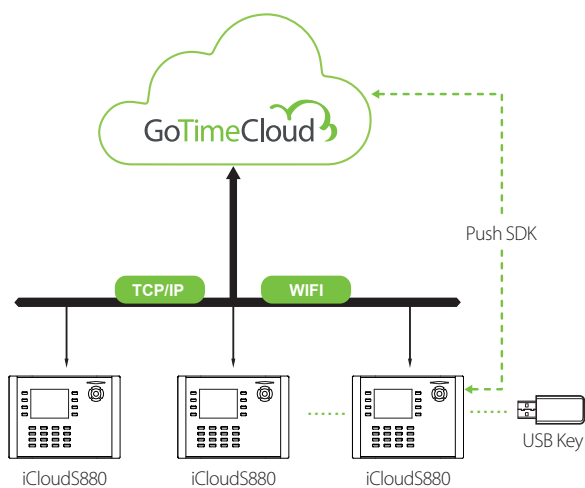
- Remarkable user experience with intuitive and stunning UI
- Interface operation adopts modularized hierarchical design. Simpler, better and more logical.
- Faster matching speed: less than 0.5 second.
- RFID verification
- Data backup and retrieve.
- Relay contacts for alarm, bell, lock, exit, etc.
- Wiegand In&Out for external readers
- Advanced User ID consisted of letters and numbers.
- Chip encryption for firmware protection.
- Excellent expandability
- Easy to extend functions and customize customers demand.

Compatible with:

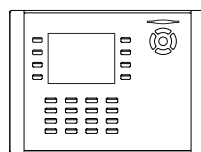
Specifications

ID Card Capacity	30,000
Record Capacity	200,000
Display	3.5-inch Screen
Communication	TCP/IP, RS232/485, USB Host
Standard Functions	Workcode, SMS, DST, Scheduled-bell, Self-Service Query, Automatic Status Switch, T9 Input, photo-ID, 9 digit user ID, and Anti-passback
Optional Functions	ID/Mifare/HID, Webserver, Wi-Fi, 3G and GPRS
Software	GoTime Cloud
Power Supply	DC 12V 1.5A (DC12 3A with GPRS, 3G)
Verification Speed	≤1 sec
Operating Temp.	0°C- 45°C
Operating Humidity	20%-80%
Dimension	205.6×150×41.6 mm (Length×Width×Thickness)
Gross Weight	1.40 kg

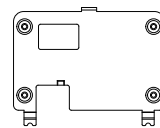
Configuration



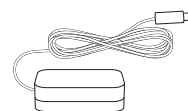
What's in the Box



iClockS880



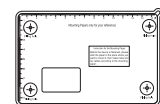
Back Plate



Power Adapter



Lines for Access Control Interface



Mounting Paper



Star-shape Screw Driver