



SpeedFace-V3L Series

Linux-Based Hybrid-Biometric Time and Attendance & Access Control Terminal with Visible Light Facial Recognition



Facial Recognition



RFID



Fingerprint

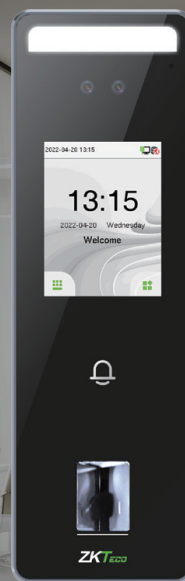


Time & Attendance

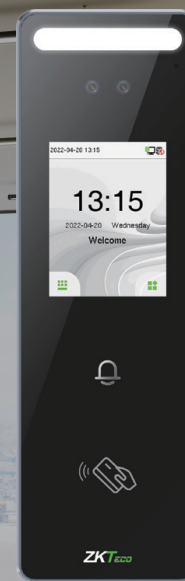


IP65 dust & waterproof rating

Compatible with



SpeedFace-V3L



SpeedFace-V3L [RFID]

SpeedFace-V3L series device is a visible light face access control stand-alone terminal. SpeedFace-V3L supports facial recognition and fingerprint. While SpeedFace-V3L[RFID] support RFID verification. This series is also equipped with ultimate anti-spoofing algorithm for facial recognition against all types of fake photos and videos attack.

SpeedFace-V3L series is compatible with GoTime Cloud Software and support IP65 water and dust resistance.

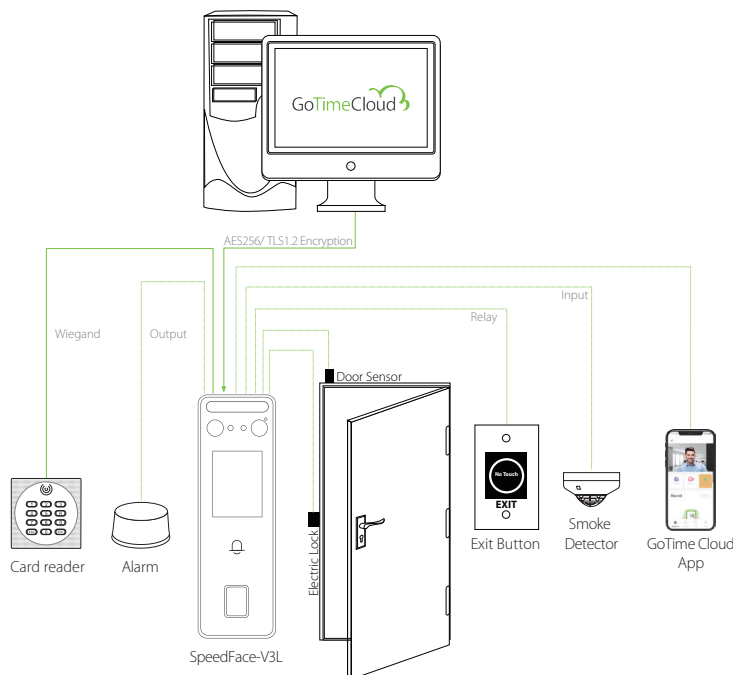
Features

- IP65 water and dust resistance
- Operating temperature from -5°C to 45°C
- Support facial / fingerprint / RFID
- Available card modules: 125KHz ID card / 13.56MHz IC card
- Fill Light with adjustable brightness
- On Board Web Server for system configuration
- Supports up to 500 facial / 3,000 fingerprint / 3,000 RFID card / 200,000 records

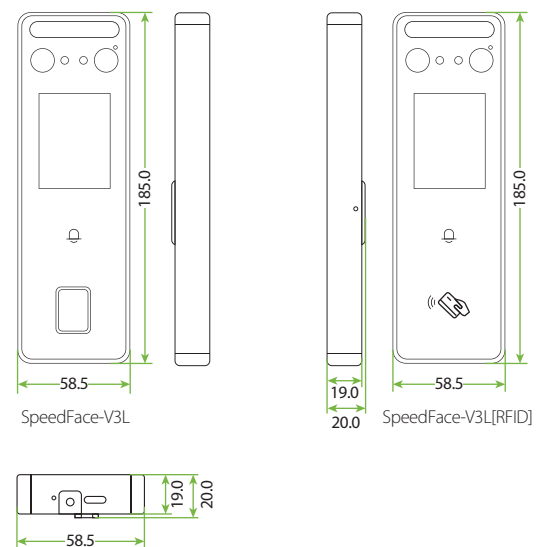
Specifications

Product Model	SpeedFace-V3L	SpeedFace-V3L[RFID]
Display	2.4-inch touch Screen	
Biometric	Face/Fingerprint	Face Only
User Capacity	3,000	
RFID	ID card(Optional), IC card(Optional)	ID card(Standard), IC card(Optional)
Card Capacity	3,000 (Optional: 10,000)	
Face Capacity	500 (Optional: 1,500)	
Fingerprint Capacity	3,000 (Optional: 5,000)	/
Logs Capacity	200,000	
Facial Recognition Algorithm	ZKFace 3.5	
Facial Recognition Speed	<1s	
Facial Recognition Distance	0.5m to 2m	
Communication	TCP/IP, WiFi(Optional), Wiegand Input/Output,RS485	
Operation System	Linux	
Standard Functions	ADMS, DST, Camera, 14-digit User ID, Access Levels, Groups, Holidays, Anti passback, Record Query, Tamper Switch Alarm, Multiple Anti-Passback	
Hardware	1.2GHz Dual Core CPU, 256MB RAM/512MB Flash, 1MP Binocular Camera Adjustable LED Fill Light	
Access Control Interface	3rd Party Electric Lock, Door Sensor, Exit Button, Alarm output, Auxiliary Input	
Power Supply	12V 3A	
Ingress Protection Rating	IP65	
Operating Temperature	-5°C to 45°C	
Operating Humidity	10% to 90% RH	
Dimensions(L*W*D)	185*58.5*20mm	
Supported Softwares	GoTime Cloud, Mobile App	

Configuration



Dimensions (mm)



V1.1EU 23/06/2023